



A Bright And Spacious Portered One Bedroom Apartment

# SOUTHWICK STREET

HYDE PARK ESTATE, W2

£575 per week

**BERKSHIRE  
HATHAWAY**  
HOMESERVICES

LONDON

# PROPERTY DETAILS

## Guide Price

£575 per week

## Square Footage

565

## Council Tax Band

F

## EPC Rating

C

A bright one bedroom apartment located on the first floor of a popular portered building with lift access and further benefits from communal gardens. The property has excellent storage throughout, a family bathroom and a spacious semi-open plan kitchen leading into a large bright reception room.

The property is well situated for the many amenities of the area, such as the boutiques shop and artisan bakeries of Connaught Village, the open spaces of Hyde Park and excellent transport links at Paddington & Marble Arch.

# FEATURES

One Bedroom

One Reception Room

Two Bathrooms

Balcony

Upper Floor

Communal Gardens

# LOCATION

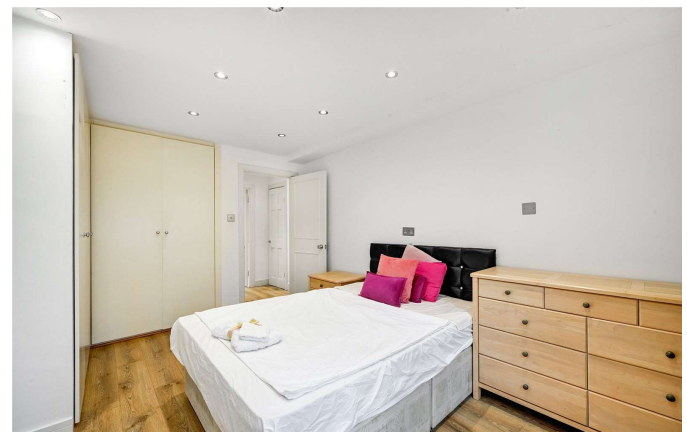
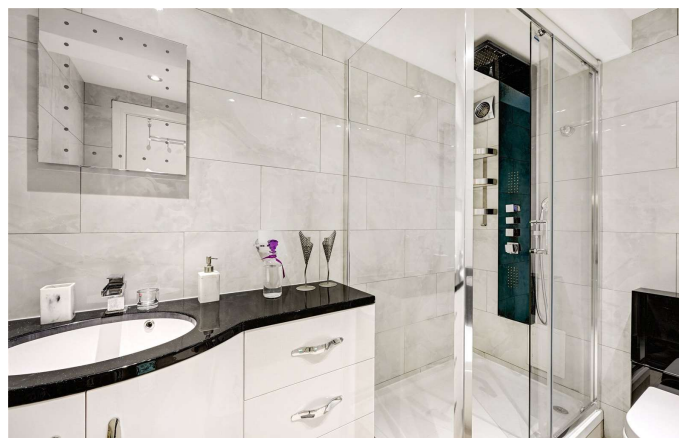


## HYDE PARK LETTINGS

24-25 Albion Street, W2 2AX

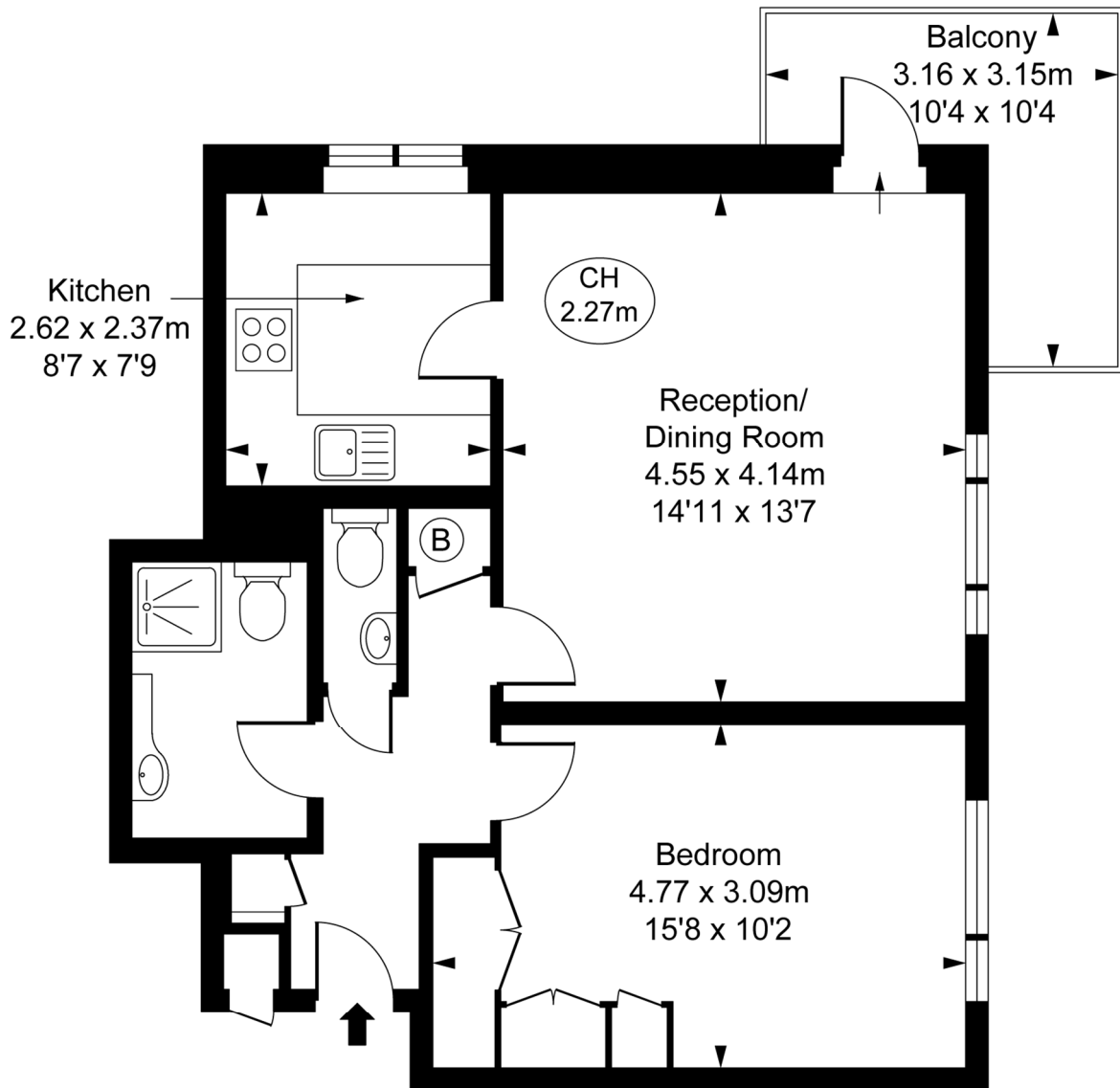
020 7262 2030

lettings.hydepark@bhhs-london.com



# FLOORPLAN

Devonport,  
Southwick Street, W2  
Approximate Gross Internal Area  
**52.49 sq m / 565 sq ft**  
( CH = Ceiling Heights )



First Floor

This plan is not to scale. It is for guidance and not for valuation purposes.  
All measurements and areas are approximate only, and have been prepared in accordance with the current edition of the RICS Code of Measuring Practice.  
© Fulham Performance