



Fantastic Three Bedroom Apartment in Portered Block

WEYMOUTH STREET

MARYLEBONE, W1W

£1,800 per week

**BERKSHIRE
HATHAWAY**
HOMESERVICES

LONDON

PROPERTY DETAILS

Guide Price

£1,800 per week

Square Footage

1175

Council Tax Band

G

EPC Rating

C

*Short-Let.

A stunning three bedroom apartment with two bathroom, a private balcony offering over 1100 sq ft, set within a sought after portered block in nestled between Marylebone and Fitzrovia.

A contemporary three bedroom flat on the third floor (with lift) of this popular portered block. The property benefits from a separate kitchen, 24 Hour Security, and Porter.

FEATURES

Three Bedrooms

One Reception Room

Two Bathroom

Lift

Upper Floor

Concierge/Porter

Balcony

Furnished

LOCATION



MARYLEBONE LETTINGS

20A Paddington Street, W1U 5QP

020 7486 6338

lettings.marylebone@bhhs-london.com

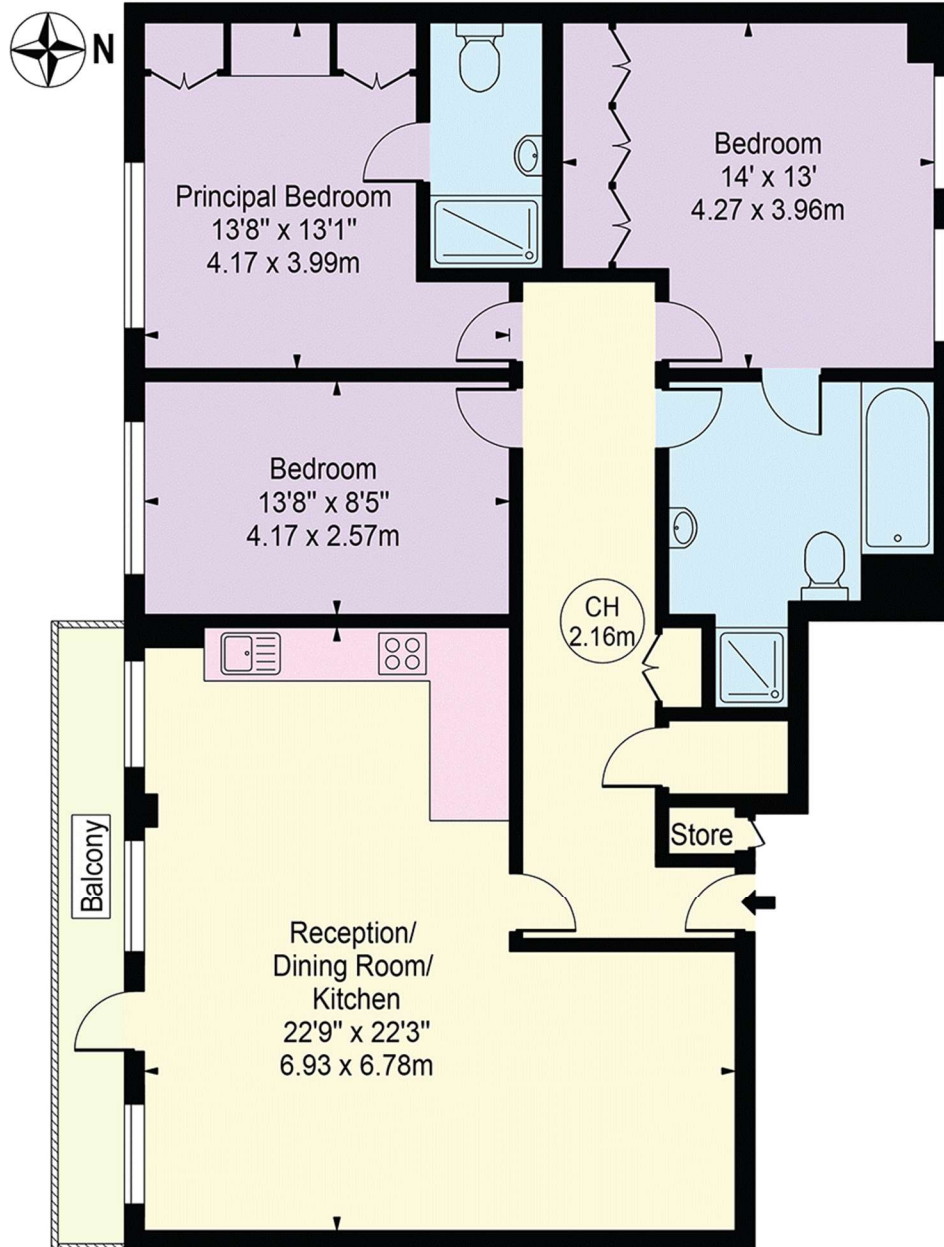


FLOORPLAN

Weymouth Street

Approx. Gross Internal Area 1175 Sq Ft - 109.16 Sq M
(Excluding Store)

Approx. External Area Of Balcony 58 Sq Ft - 5.39 Sq M



First Floor

For Illustration Purposes Only - Not To Scale

This floor plan should be used as a general outline for guidance only and does not constitute in whole or in part an offer or contract. Any intending purchaser or lessee should satisfy themselves by inspection, searches, enquiries and full survey as to the correctness of each statement. Any areas, measurements or distances quoted are approximate and should not be used to value a property or be the basis of any sale or let.

Copyright Morriarti Photography & Design LTD