



A Contemporary Upper Floor Two Bedroom Apartment

# WEYMOUTH STREET

MARYLEBONE, W1W

£1,050 per week

**BERKSHIRE  
HATHAWAY**  
HOMESERVICES

LONDON

# PROPERTY DETAILS

---

**Guide Price**

£1,050 per week

**Square Footage**

800

---

**Council Tax Band**

G

**EPC Rating**

C

---

A contemporary two bedroom flat on the fourth floor (with lift) of this popular portered block. The property benefits from wood floors, open plan kitchen to reception, master bedroom, bathroom, guest cloakroom, second double bedroom, Air-Conditioning, 24 Hour Security, Concierge and Housekeeping services (at an extra cost). Furnished.

## FEATURES

---

Two Bedrooms

---

One Reception Room

---

Two Bathrooms

---

Furnished

---

Lift

---

Wood Flooring

---

24 Hour Security

---

Concierge/Porter

---

## LOCATION



### MARYLEBONE LETTINGS

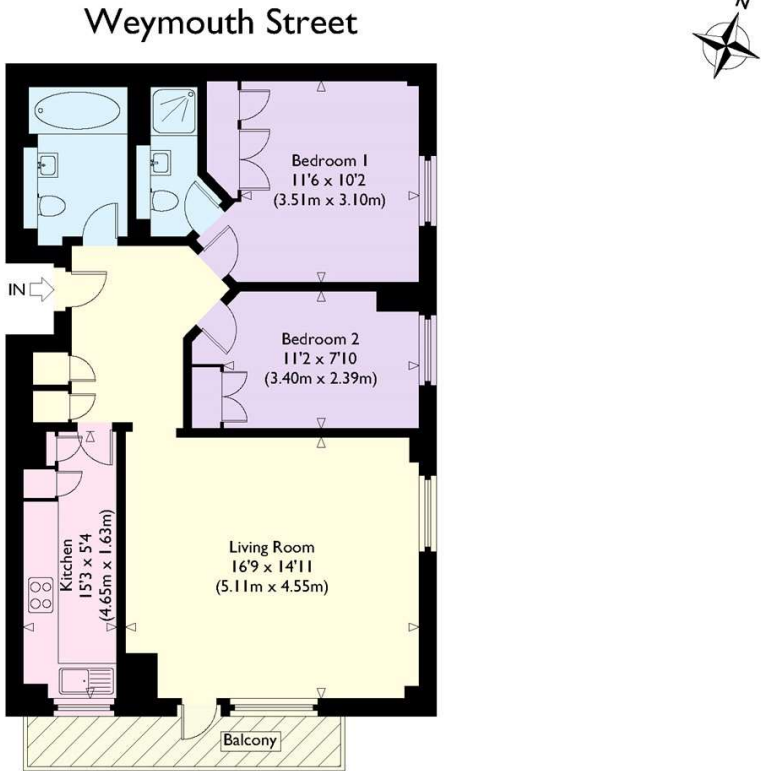
20A Paddington Street, W1U 5QP

020 7486 6338

lettings.marylebone@bhhs-london.com



# FLOORPLAN



Second Floor  
Approximate Gross Internal Floor Area : 773 sq ft / 71.8 sq m  
Illustration for identification purposes only, measurements are approximate, not to scale.